

Rapid and Reliable Method for Quantification of *Mycobacterium paratuberculosis* by Use of the BACTEC MGIT 960 System[∇]

Sung Jae Shin,^{1†} Jun Hee Han,² Elizabeth J. B. Manning,¹ and Michael T. Collins^{1*}

Department of Pathobiological Sciences, School of Veterinary Medicine, University of Wisconsin—Madison, 2015 Linden Drive, Madison, Wisconsin 53706-1102,¹ and Department of Statistics, College of Letters and Sciences, University of Wisconsin—Madison, 1300 University Avenue, Madison, Wisconsin 53705²

Received 30 December 2006/Returned for modification 6 March 2007/Accepted 28 March 2007

A simple method for the enumeration of viable *Mycobacterium paratuberculosis* cells was developed and evaluated using the MGIT 960 culture system. For each of 12 *M. paratuberculosis* strains isolated from either cattle or humans, single-cell suspensions of *M. paratuberculosis* cells were adjusted to an optical density at 600 nm of 1.00 ($10^{7.6}$ to $10^{8.2}$ cells/ml), and serial dilutions were prepared. Standard curves were established by relating the MGIT time-to-detection data to the \log_{10} CFU for these suspensions using standard plate counting and BACTEC 460 results as reference methods. Universal and strain-specific standard quantification curves were generated. A one-phase exponential decay equation best fit the universal standard curve and strain-specific curves (R^2 of 0.96 and >0.99, respectively). Two subgroups within the universal curves were distinguished: one for laboratory-adapted strains and the other for recently isolated low-passage bovine strains. The predictive errors for \log_{10} estimations using the universal standard curve, each subgroup's standard curve, and strain-specific curves were ± 0.87 , ± 0.45 , and $\pm 0.31 \log_{10}$ units, respectively. CFU estimations by all three standard curves were highly reproducible, regardless of the *M. paratuberculosis* strain or inoculum volume. In comparison with the previously described BACTEC 460 *M. paratuberculosis* counting method, quantification with MGIT 960 was less expensive, more rapid, more accurate, and more sensitive (<10 CFU). This MGIT counting method has broad applications for studies requiring the quantification of viable *M. paratuberculosis* cells, such as drug susceptibility testing or environmental survival studies.

Quantification of viable bacteria is a crucial foundation for many types of research. This seemingly simple task can be challenging, expensive, and imprecise for *Mycobacterium paratuberculosis*, a slowly growing organism (>24-h generation time) with a strong tendency to form large clumps (15). Studies of environmental survival, resistance to pasteurization or disinfectants, and quantification of the pathogen in milk and feces from infected animals are just a few examples that require precise and sensitive quantification of viable *M. paratuberculosis* cells.

The first liquid culture system used for the detection of *M. paratuberculosis* in clinical samples was the BACTEC 460 system (Becton Dickinson, Sparks, MD), based on a modified 12B (radiometric) culture medium (8). An algorithm for converting cumulative growth index units in the BACTEC 460 system into the number of inoculated *M. paratuberculosis* cells was previously reported (21). This algorithm has been used both in its original form as well as in a more simplified form for multiple studies of *M. paratuberculosis* and has proven to be invaluable for studies of *M. paratuberculosis* survival in the face of multiple chemical, physical, and environmental challenges (16, 21, 26, 28–31, 34).

The BACTEC 460 TB system has been replaced with the

new nonradiometric BACTEC MGIT (mycobacterial growth indicator tube) 960 system (9, 15, 20), designed for the detection of mycobacterial species commonly found in human clinical samples (5, 15, 17). The system uses an oxygen-quenching fluorescent sensor in conjunction with software algorithms to determine when tubes are “positive,” i.e., when significant bacterial growth has occurred. This system has been adapted for the detection of *M. paratuberculosis* in veterinary clinical samples by using a new culture medium specific for *M. paratuberculosis*, called MGIT ParaTB medium (Becton Dickinson, Sparks, MD), and a modified algorithm built into the MGIT 960 instrument for the interpretation of fluorescence measurements made hourly for each culture tube (4).

The advantages of the MGIT 960 system for culture, the recovery of slowly growing mycobacteria from clinical samples, have already been reported (18, 22, 25). The instrument reports results as time to detection (TTD) in days and hours. Just as with the BACTEC system, additional testing is required to confirm the identity of mycobacterial isolates, usually acid-fast staining and PCR (24, 32). The quantitative capabilities of the MGIT 960 system have not previously been explored.

The goal of this study was to create a method for counting *M. paratuberculosis* cells analogous to what was previously reported for the BACTEC 460 system (21) using MGIT TTD data.

MATERIALS AND METHODS

Bacterial strains, cultures, and preparation of *M. paratuberculosis* single-cell suspensions. A total of 12 *M. paratuberculosis* strains isolated from cattle or humans were used in this study: ATCC 19698, K-10, JTC100, JTC102, JTC114, JTC303, USF-5, UCF-7, B213, B236, B238, and B244. Strains ATCC 19698 and

* Corresponding author. Mailing address: Department of Pathobiological Sciences, School of Veterinary Medicine, University of Wisconsin—Madison, 2015 Linden Dr., Madison, WI 53706-1102. Phone: (608) 262-8457. Fax: (608) 265-6463. E-mail: mcollin5@wisc.edu.

† Current address: Department of Microbiology, College of Medicine, Chungnam National University, Daejeon 301-747, South Korea.

[∇] Published ahead of print on 11 April 2007.

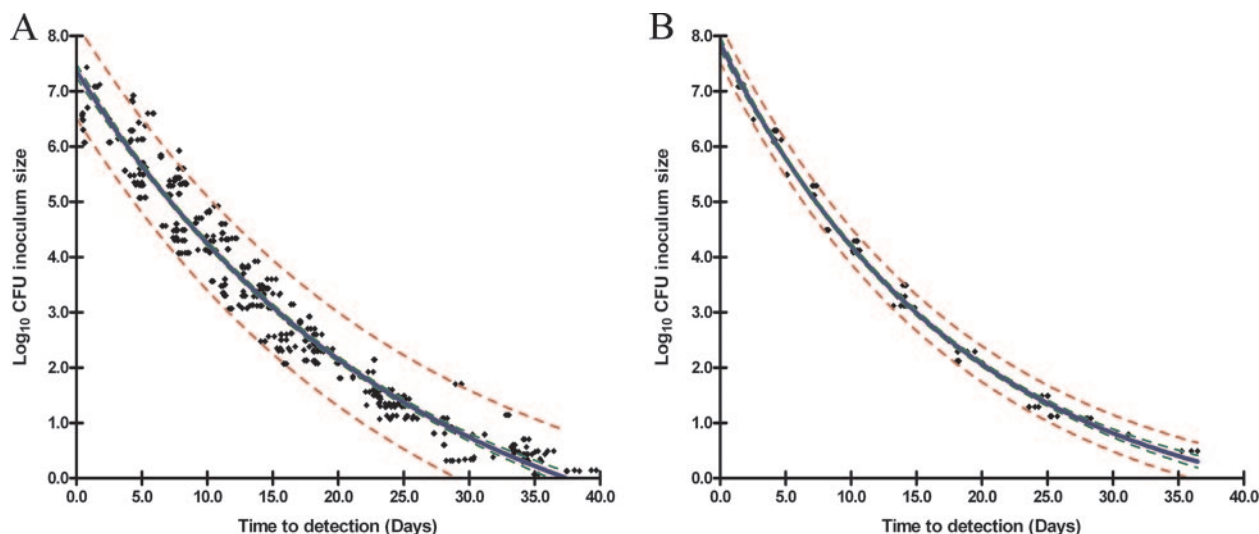


FIG. 1. Generation of standard curves for *M. paratuberculosis* using the MGIT 960 culture system. (A) Universal standard curve for the pooled data from 12 strains of *M. paratuberculosis* [\log_{10} CFU inoculum size = $9.515 \times e(-0.03977 \times \text{TTD}) - 2.143$]. (B) Representative strain-specific standard curve of *M. paratuberculosis* ATCC 19698 [\log_{10} CFU inoculum size = $8.802 \times e(-0.0538 \times \text{TTD}) - 0.93851$]. The blue line shows the best-fitting curve for all strains. The red dotted lines and green dotted lines show 95% PIs and 95% CIs, respectively.

K-10 are type strains; those with the JTC prefix are clinical isolates recovered from bovine fecal or tissue samples by the Johne's Testing Center (School of Veterinary Medicine, University of Wisconsin—Madison). Strains UCF-5 and UCF-7 are *M. paratuberculosis* strains of human origin that were recently isolated from Crohn's disease patients. These strains and four bovine strains, B213, B236, B238, and B244, were kindly provided by Saleh A. Naser (University of Central Florida, Orlando, FL). All strains were cultivated in 7H9 broth supplemented with 10% oleic acid-albumin-dextrose-catalase (Difco Laboratories, MD) and 2 $\mu\text{g}/\text{ml}$ of mycobactin J (Allied Monitor, Fayette, MO) for 1 month at 37°C. The identity of the organisms was verified by multiplex PCR (2, 3) for the insertion elements IS900, IS901, IS1311, and IS1245 as well as by high-performance liquid chromatography of cell wall mycolic acids by a reference laboratory (State Laboratory of Hygiene, Madison, WI).

Preparation of mycobacterial cells. Single-cell suspensions of each strain were prepared as previously described, with slight modifications (21). Briefly, mycobacterial cells grown in mycobactin-supplemented 7H9 broth were harvested by centrifugation at $10,000 \times g$ for 20 min and washed three times in 10 mM phosphate-buffered saline (PBS) (pH 7.2). Cell pellets were homogenized using an overhead stirrer (Wheaton Instrument, Milville, NJ) for 1 min on ice to minimize clumping of cells. The homogenized mycobacterial cells were passed through an 8- μm -pore-size filter (Millipore Corp., Bedford, MA). The predominance of single cells in the final preparation was confirmed by an examination of acid-fast-stained slides. Seedlots of each strain were then kept in 1.5-ml aliquots at -80°C until use.

Colony counts. The number of viable mycobacterial cells in each single-cell suspension was determined by standard plate counting as a reference method. Briefly, the undiluted stock cell suspension (1.0 ml) was added to 9.0 ml of 10 mM PBS (pH 7.2). Tenfold serial dilutions were made in 10 mM PBS (pH 7.2), with vortexing between each dilution step. One hundred microliters from each dilution was plated onto each of three 7H10 agar plates supplemented with 10% oleic acid-albumin-dextrose-catalase and 2 $\mu\text{g}/\text{ml}$ of mycobactin J. Colony counts (CFU) were determined after the incubation of plates at 37°C for 10 weeks. MGIT ParaTB tubes were inoculated in triplicate with 100 μl of the same serial dilutions. To evaluate the effect of the MGIT tube inoculum volume, one set of tubes was inoculated with 100 μl and another was inoculated with 1,000 μl from each of the serial dilutions of multiple *M. paratuberculosis* strains.

Experiment I: generation of standard curves. Serial dilutions of single-cell suspensions of each of the 12 *M. paratuberculosis* strains were prepared, and 100 μl was inoculated into ParaTB MGIT medium (Becton Dickinson, Sparks, MD) as described above. Each tube contained 7 ml of modified Middlebrook 7H9 broth base with mycobactin J and a fluorescent indicator embedded in silicon on the bottom of the tube. Eight hundred microliters of MGIT ParaTB supplement (Becton Dickinson, Sparks, MD), 500 μl of egg yolk suspension (Becton Dickinson, Sparks, MD), and 100 μl of VAN cocktail (Becton Dickinson, Sparks,

MD) were added to each tube, resulting in final concentrations of 10 $\mu\text{g}/\text{ml}$ vancomycin, 40 $\mu\text{g}/\text{ml}$ amphotericin B, and 60 $\mu\text{g}/\text{ml}$ nalidixic acid, as per the manufacturer's instructions. The tubes were inoculated in triplicate, incubated at 37°C in an MGIT 960 instrument, and removed when the instrument signaled positive. Acid-fast staining (Ziehl-Neelsen) was performed on smears made from each signal-positive tube to confirm the presence of mycobacteria. This experiment was completed twice. The TTD (days) for each tube was recorded and plotted against \log_{10} CFU inoculum to generate a standard curve for each strain tested (i.e., the strain-specific standard curve). In addition, the data for all 12 *M. paratuberculosis* strains were pooled to create a universal standard curve. The model that best fit the data was determined using statistical software (GraphPad Prism version 4.03 for Windows; GraphPad Software, San Diego, CA). Two methods were used to compare the universal standard curve to the strain-specific curves. First, cross-validation for each strain was performed based on pooled data for the other 11 strains. Second, the standard error for the strain-specific curve was compared with that of the universal standard curve at 95% prediction intervals (PI) for \log_{10} CFU estimates.

Experiment II: utilization of the MGIT 960 TTD counting method. The ability of the MGIT ParaTB quantification standard curves to accurately predict *M. paratuberculosis* CFU was determined with randomly selected dilutions prepared from seven strains (ATCC 19698, JTC303, JTC114, UCF-5, UCF-7, B238, and B244). Plate-counted CFU were compared to predicted CFU based on both the strain-specific and universal standard curves. These counts were obtained independently from the results from experiment I. The relationship between the observed and predicted CFU counts was evaluated by correlation coefficients.

Comparison of *M. paratuberculosis* quantification by the BACTEC 460 and MGIT 960 methods. Using plate counts as the reference method, CFU predictions for the same *M. paratuberculosis* cell suspensions were obtained by both the BACTEC 460 and MGIT 960 methods. The BACTEC 460 method was performed as previously described (21), with the following slight modifications. Briefly, 100 μl of 10-fold dilutions from each strain was inoculated into three BACTEC 12B vials containing 4 ml Middlebrook 7H12B medium supplemented with 2 $\mu\text{g}/\text{ml}$ of mycobactin J, 1.0 ml of egg yolk (Becton Dickinson, Sparks, MD), and the same final concentrations of antibiotics as those used for MGIT tubes. All vials were incubated at 37°C without shaking. The growth index for each vial was measured every 24 h for 8 weeks by the BACTEC 460 instrument using a normal atmosphere for gas exchange. The upper limit for the designation of no growth for inoculated vials as well as negative controls was 30 growth units after 8 weeks. The instrument was calibrated weekly according to the manufacturer's instructions. When cumulative growth index readings exceeded 2,000 units, a previously described algorithm was used to estimate CFU of *M. paratuberculosis* inoculated.

Comparison of MGIT and spectrophotometric enumeration methods. Five *M. paratuberculosis* strains were selected (ATCC 19698, UCF-5, UCF-7, B236, and

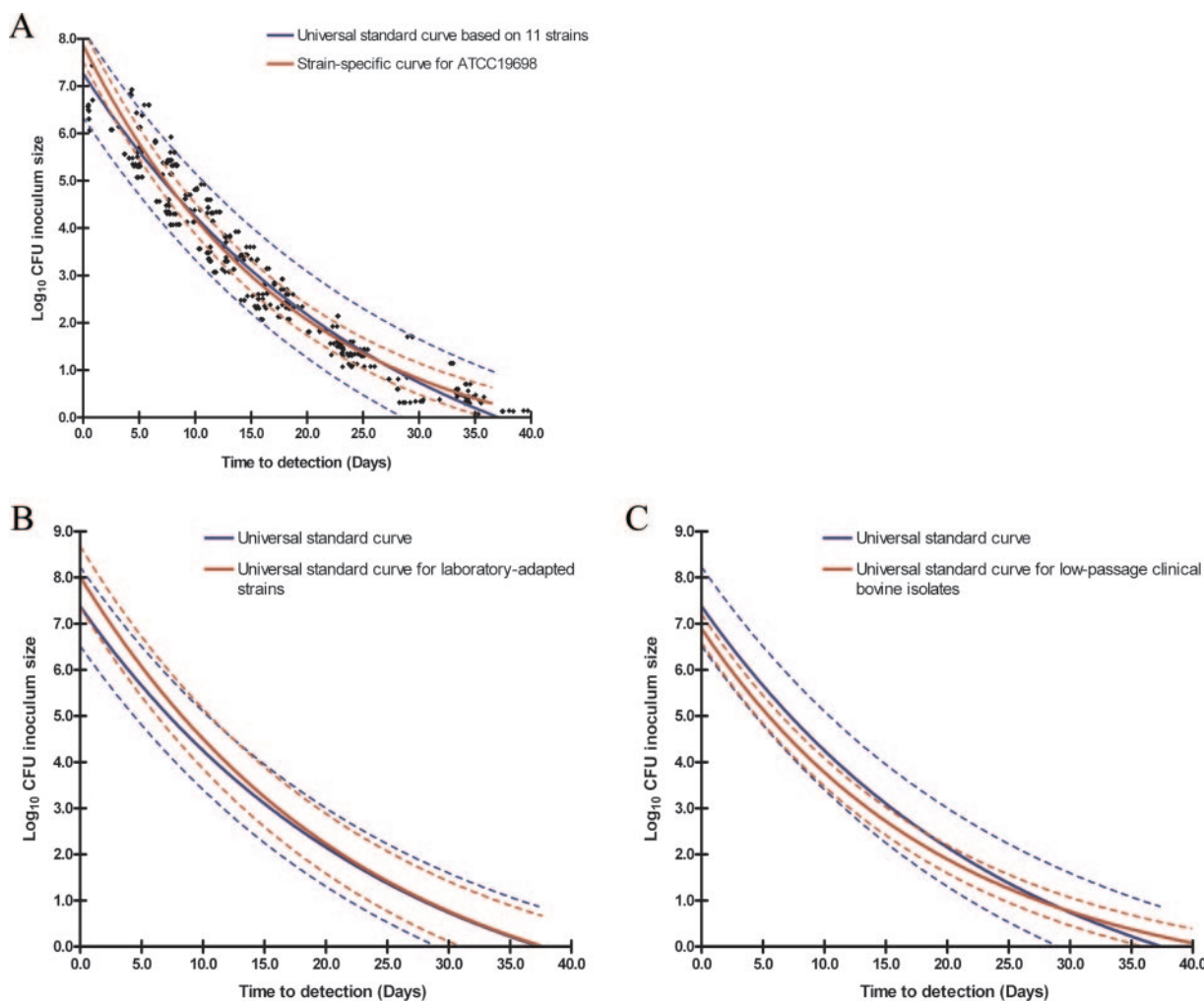


FIG. 2. Validity of the universal standard curve and generation of subgroup universal standard curves for laboratory-adapted strains and low-passage clinical bovine isolates. (A) Representative curve for the cross-validation for *M. paratuberculosis* ATCC 19698 in a universal standard curve based on the other 11 *M. paratuberculosis* strains [\log_{10} CFU inoculum size = $9.699 \times e(-0.03728 \times \text{TTD}) - 2.430$]. (B) Subgroup universal standard curves for group I strains (type strains and laboratory-adapted strains) [\log_{10} CFU inoculum size = $9.927 \times e(-0.0437 \times \text{TTD}) - 1.910$]. (C) Subgroup universal standard curve for group II strains (low-passage clinical bovine isolates) [\log_{10} CFU inoculum size = $7.855 \times e(-0.05052 \times \text{TTD}) - 0.9633$]. The blue line and red line show the best-fitting curve for the universal strains and specific strain tested, respectively. The dotted lines of the same color show the 95% PIs for the respective best-fit curves.

B238). Stock suspensions of each strain were suspended in 10 mM PBS (pH 7.2) to an optical density at 600 nm (OD_{600}) of 1.00 using a spectrophotometer (Biomate 3; Thermo Electron Corp., Madison, WI). Tenfold dilutions ($100 \mu\text{l}$ of 10^0 to 10^6 CFU) were inoculated into triplicate supplemented MGIT ParaTB tubes. The tubes were incubated in the MGIT 960 instrument, and the TTD was recorded for each tube. CFU inoculated per tube were predicted by both the universal standard curve and the matching strain-specific standard curve. The predicted \log_{10} CFU were compared with observed colony counts on plates. Initial *M. paratuberculosis* cell concentrations in stock suspensions were calculated by multiplying CFU by the relevant dilution factors.

RESULTS

Generation of standard curves. Standard curves (CFU versus TTD) for each of the 12 *M. paratuberculosis* strains (strain-specific standard curves) (Fig. 1B) as well as the pooled data for all 12 strains (universal standard curve) (Fig. 1A) were fitted to a one-phase exponential decay model with three parameters: \log_{10} inoculum size = span $\times e(-K \times \text{TTD}) +$

plateau. Span is the difference between TTD at time zero and the plateau, K is degree of decay for the \log_{10} CFU, and plateau is the value for \log_{10} CFU curve flattening. Estimations for span, K , and plateau were obtained by a nonlinear least-squares approach using GraphPad Prism 4.03 software. The R^2 of goodness-of-fit values between TTD and \log_{10} CFU in the universal standard curve and strain-specific curves were 0.96 and >0.99 , respectively.

Comparison between universal standard curve and strain-specific standard curves. The validity of applying the universal standard curve for each of 12 different strains was determined by cross-validation and prediction errors. In the cross-validation assessment, the CFU counts obtained from the strain-specific curve for each of the 12 strains were within the 95% PI compared with the universal standard curve based on the other 11 strains (Fig. 2A). This was true for every *M. paratuberculosis* strain tested in this study. As expected, a strain-specific curve

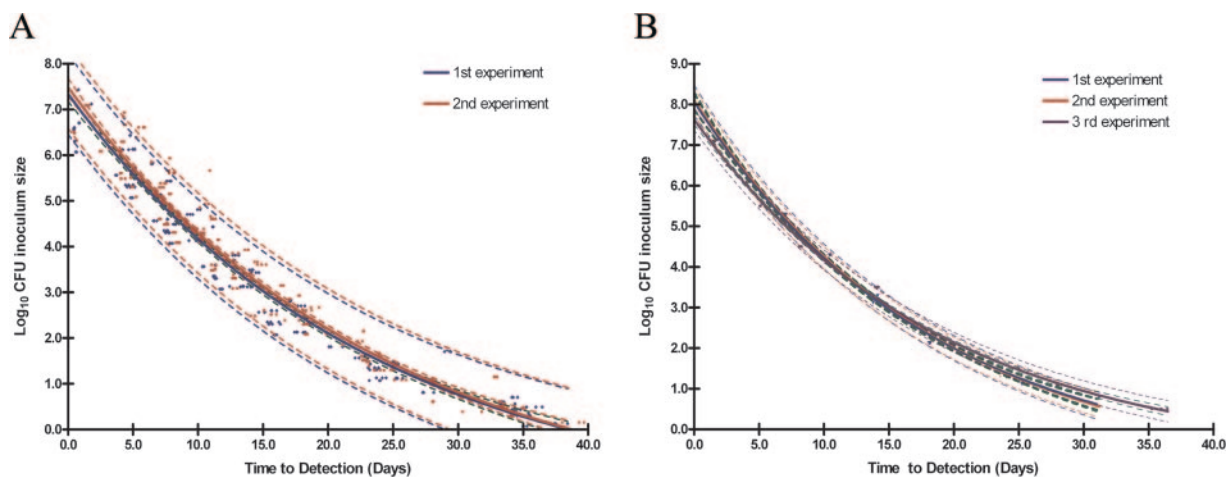


FIG. 3. MGIT counting model reproducibility. (A) Correlation between observed and predicted CFU using the universal standard curve for 12 *M. paratuberculosis* strains repeated twice. (B) Correlation between observed and predicted CFU using the *M. paratuberculosis* ATCC 19698 strain-specific model repeated three times. The dotted lines with the same color for each standard curve and green dotted lines show 95% PIs and 95% CIs, respectively.

was more accurate for itself (very narrow 95% PI) than was the universal standard curve. Mean CFU prediction errors for the universal standard curve and strain-specific curves were ± 0.87 \log_{10} CFU and ± 0.31 \log_{10} CFU, respectively. CFU predictions were higher (>1.0 \log_{10} CFU) for the universal standard curve when $>10^{6.5}$ CFU *M. paratuberculosis* were inoculated into an MGIT ParaTB tube.

While the universal standard curve was accurate for all strains, by comparing cross-validations and pattern similarities of strain-specific curves, two subgroups within the universal standard curve became evident: subgroup I contained laboratory-adapted strains (Fig. 2B), and subgroup II was made up of recently isolated, low-passage clinical isolates (Fig. 2C). Strains ATCC 19698, K-10, JTC100, JTC114, and JTC303 belonged to subgroup I, and strains JTC102, B213, B236, B238, and B244 belonged to subgroup II. In subgroup I, none of the strains had identical strain-specific standard curves. The strain-specific standard curves for subgroup I were quite similar to the universal standard curve, but these strains tended to grow more slowly when inoculated at 10^3 to 10^7 CFU (Fig. 2B). In contrast, all subgroup II strains had identical strain-specific standard curves at 95% confidence intervals (CI) with CFU predictions similar to those of the strain-specific standard curves. Generally, subgroup II strains grew more rapidly than subgroup I strains (Fig. 2C). Data pooled by subgroup produced subgroup I and subgroup II standard curves. These two curves showed a better fit to the model, with R^2 values of 0.97 and 0.99, respectively, and more accurately predicted CFU for the relevant strains than did the universal standard curve, whose prediction errors were ± 0.65 and ± 0.37 \log_{10} CFU, respectively. Two human strains were excluded from the subgroup standard curves because their growth patterns did not fit either subgroup.

Reproducibility of the MGIT counting method. MGIT CFU predictions, repeated in a second independent trial with all 12 strains, were compared using an unpaired *t* test with Welch's correction. No statistically significant difference was observed between the two experiments ($P = 0.70$). The correlation (r)

between CFU estimations predicted by each experiment's universal standard curves was 0.99 when CFU estimations were compared at the same inoculum sizes (Fig. 3A). In addition, no significant difference was observed between CFU from plate counts and CFU estimations predicted by both universal standard curves ($P > 0.05$ by multiple comparison). Three *M. paratuberculosis* strains (ATCC 19698, JTC303, and JTC114) were selected for reproducibility analysis of strain-specific standard curves as well. Counting experiments for each strain were performed at least three times. The correlation between observed and predicted \log_{10} CFU (using strain-specific models among repeated experiments for ATCC 19698, JTC303, and JTC114) was >0.99 (Fig. 3B).

Effect of inoculum volume. The effect of inoculum volume at a uniform *M. paratuberculosis* concentration was tested over a wide range of dilutions. Tenfold serial dilutions of three *M. paratuberculosis* strains were prepared as described above. MGIT ParaTB tubes were inoculated with either 100 μ l or 1,000 μ l of *M. paratuberculosis* cell suspension. When predicted CFU counts for tubes with different inoculum volumes but the same expected number of *M. paratuberculosis* cells, e.g., 100 μ l of 10^5 CFU/ml versus 1,000 μ l of 10^4 CFU/ml, were compared, counts were highly correlated ($r > 0.99$) (Fig. 4).

Predicted \log_{10} CFU for samples of unknown concentrations. Triplicate CFU determinations for seven *M. paratuberculosis* strains tested over a wide range of cell concentrations were compared using the strain-specific, subgroup-specific, and universal models by multiple comparisons. When all results were combined, the CFU determinations based on the strain-specific, subgroup-specific, and universal models were highly correlated ($r = 0.99$, $r = 0.98$, and $r = 0.97$, respectively [95% CI]) (Fig. 5). The predicted numbers of cells for unknown samples tested in this experiment using the universal standard curve, subgroup-specific curves, and strain-specific curves erred by ± 0.69 , ± 0.49 , and ± 0.35 \log_{10} units, respectively (95% PI). These differences among the three models were not considered to be statistically significant ($P = 0.77$ by multiple comparison test).

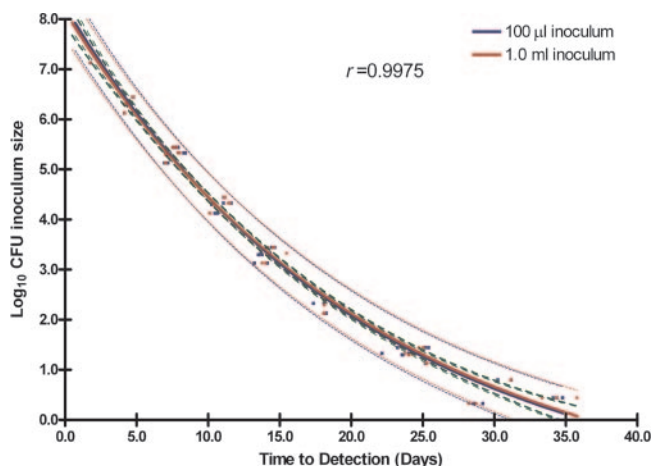


FIG. 4. TTD values correlated with CFU counts for MGIT ParaTB tubes inoculated with different volumes but the same CFU (100 µl of 10⁵ CFU versus 1,000 µl of 10⁴ CFU). Data for three *M. paratuberculosis* strains (ATCC 19698, JTC303, and JTC114) are shown. The dotted lines with the same color for each standard curve and green dotted lines show 95% PIs and 95% CIs, respectively.

Comparison of CFU prediction accuracy between the MGIT and BACTEC methods. Using only *M. paratuberculosis* strain ATCC 19698, CFU predictions were compared using the BACTEC model and MGIT universal standard curve (triplicate determinations). While the predicted CFU counts were the same for both systems, for *M. paratuberculosis* at 10^{3.5} to 10^{6.5} CFU ($P = 0.88$ by multiple comparison test; $r > 0.99$), results were obtained in less than half the time with the MGIT method and over a greater dynamic range (6 logs versus 3 logs) compared to the BACTEC method (Table 1).

Correlation of MGIT and spectrophotometric methods. Suspensions of *M. paratuberculosis* cells from five different strains were adjusted to an OD₆₀₀ of 1.00 for five different strains and then serially diluted 10-fold in PBS. Predicted log₁₀ CFU concentrations for each dilution of each strain by both the universal and strain-specific standard curves matched plate counts between 10 and 10^{-5.0} dilutions (Table 2) ($P > 0.05$ by multiple comparison test). Significant differences at the lowest dilution (<10 CFU) and at the highest dilution (>10^{-6.5}) were observed (i.e., TTD results varied across replicates) ($P < 0.05$ by multiple comparison test) (Table 2). Overall, however, CFU predictions at each dilution using the universal standard curve did not differ from plate counts ($P = 0.43$ by paired Wilcoxon

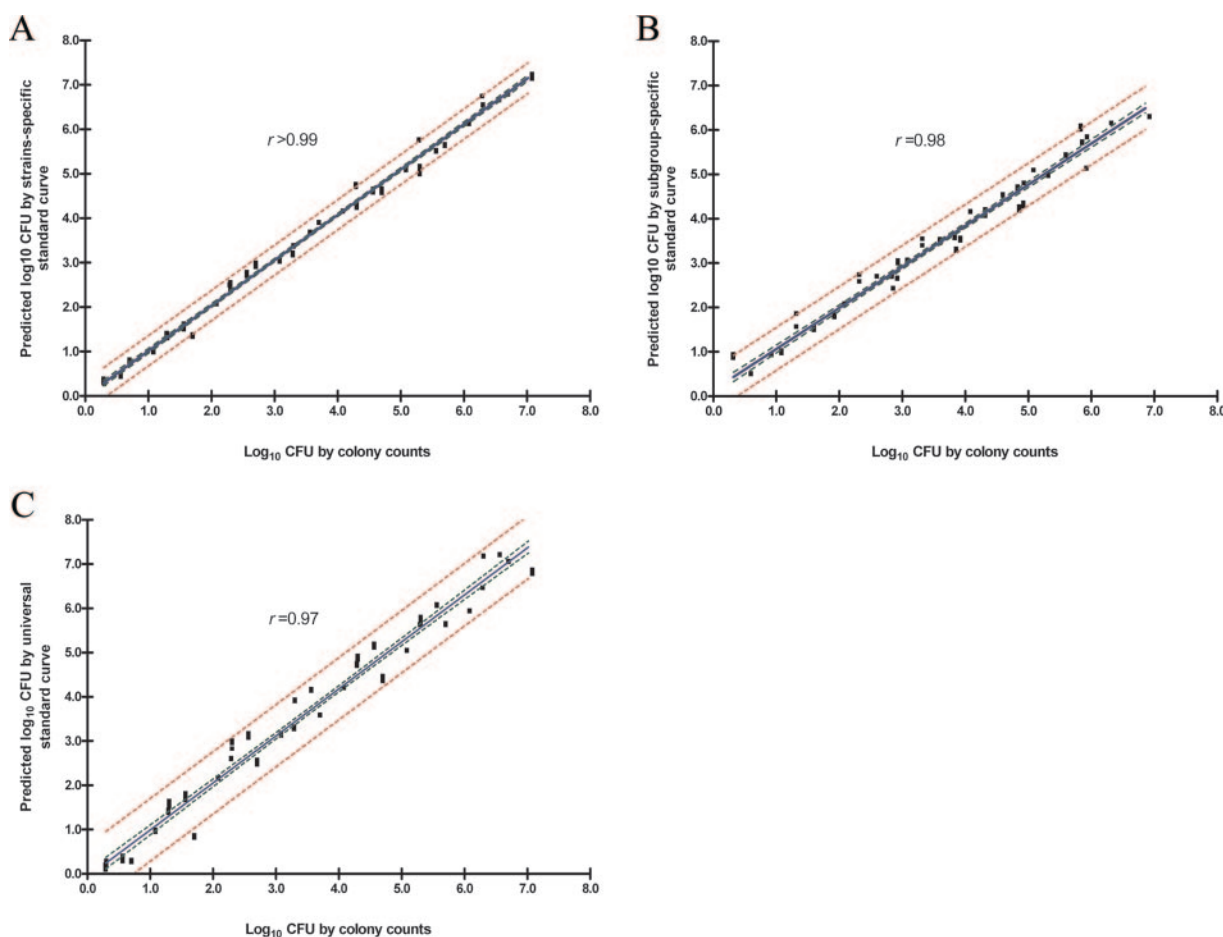


FIG. 5. Correlation between actual CFU and predicted CFU. (A) Predictive CFU based on the strain-specific standard curves. (B) Predictive CFU based on the subgroup-specific standard curves. (C) Predictive CFU based on the universal standard curve. The red dotted lines and green dotted lines show 95% PIs and 95% CIs, respectively.

TABLE 1. Comparison of predicted *M. paratuberculosis* counts by MGIT 960 and BACTEC 460 culture systems

CFU by plate counting (log ₁₀)	MGIT 960		BACTEC 460	
	CFU (mean ± SE)	Time to results (days)	CFU (mean ± SE)	Time to results (days)
6.49	6.74 ± 0.00	2	6.77 ± 0.12	10
5.49	5.76 ± 0.01	4	5.78 ± 0.10	15
4.49	4.73 ± 0.03	7	4.70 ± 0.12	19
3.49	3.19 ± 0.03	10	3.45 ± 0.11	28
2.49	2.50 ± 0.01	15	UD ^a	>35
1.49	1.37 ± 0.03	20	UD	
0.49	0.34 ± 0.04	28	UD	

^a UD, undeterminable beyond 8 weeks of incubation.

signed-rank test). TTD intervals among dilutions were consistent and predictable regardless of the *M. paratuberculosis* strain used.

DISCUSSION

Standard plate counting methods for slowly growing mycobacteria are laborious, expensive, and time-consuming and frequently fail due to either contamination or medium dehydration during the required 30- to 50-day incubation (6, 10, 34). Spectrophotometric methods for the standardization of cell suspensions provide only rough estimations of bacterial cell concentrations, and replicated counts may vary by >1 log₁₀ CFU/ml (7, 27).

The TTD data reported by the MGIT 960 system with the new ParaTB medium supplemented were highly correlated to colony counts determined by standard plate counting methods. Standard curves for all 12 strains approximated a linear relationship between CFU and TTD, but a one-phase exponential decay curve mode best fit the data. Pooling the data from 12 *M. paratuberculosis* strains created a universal standard growth curve with narrow prediction errors (<1 log₁₀ CFU) that can be reliably used for quantification for a variety of experiments. While the greatest accuracy in predicting *M. paratuberculosis* CFU was obtained by the use of a strain-specific standard curve (±0.31 log₁₀ CFU [95% PI]), this additional precision is not needed for most mycobacterial research trials. Note the differences in strain-specific standard curves for low-passage

bovine strains of *M. paratuberculosis* (subgroup II) and laboratory-adapted strains (subgroup I). A characteristic of subgroup II strains was their identical strain-specific standard curves (95% CI). In contrast, subgroup I strains showed greater variability among strains; i.e., strain-specific standard curves varied more extensively, although the overall pattern of standard curves for these strains was similar. With the appropriate subgroup standard curve, CFU counts for recently isolated bovine organisms were as accurately predicted as with strain-specific standard curves (±0.37 versus ±0.31 log₁₀ CFU [95% PI]).

Subgroup II strains grew faster than subgroup I strains, especially at higher inocula (>10³ CFU). This growth rate difference between laboratory-adapted and low-passage clinical isolates could possibly be explained by the genetic differences between strains, by sample storage conditions, or by greater clumping at high inocula. Our group and others have shown the varied effect on growth rates and phenotypic characteristics caused by different types of media (11, 30). In this study, the laboratory-adapted strains had been subcultured in Watson-Reid medium, stored at -80°C for several months, and reconstituted in 7H9 broth, while the other strains were cultured in 7H9 broth since their initial isolation. This medium difference may contribute to growth rate variation. Interestingly, it has been reported that clumping increases the growth rate of mycobacteria both in vitro and in vivo (19, 21).

A reliable and accurate prediction of log₁₀ *M. paratuberculosis* CFU was obtained between 10^{1.5} and 10^{6.5} CFU (dynamic range), with very low variation when the universal standard curve was applied for all study strains. However, both high concentrations of *M. paratuberculosis* cells (>10^{6.5} CFU with a TTD of <3 days) and very low CFU (<10¹ CFU with a TTD of >30 days) cannot reliably be measured by these MGIT methods. The 95% prediction errors at these ranges were considerably wider than 1.0 log₁₀ CFU. In addition, although the prediction errors were small in smaller inoculum sizes (inoculum of less than 1.0 log₁₀ CFU), the coefficient variations were relatively high (i.e., 0.16% with an inoculum of 1 log₁₀ CFU versus 0.09% with an inoculum of 6 log₁₀ CFU). As a result, this counting method is not recommended for *M. paratuberculosis* cell concentrations of >10^{6.5} or <10^{1.0} per MGIT ParaTB tube. Another factor that may affect the quantification accu-

TABLE 2. Correlation of *M. paratuberculosis* enumeration methods from a cell suspension adjusted to an OD₆₀₀ of 1.00

Dilution (cells/ml) ^a	Range (mean ± SE)					P value for comparison at each dilution between log ₁₀ CFU ^d
	TTD	Plate count (log ₁₀ CFU range)	Predicted CFU		TTD intervals between dilutions (days) ^b	
			Universal standard curve	Strain-specific standard curve		
10 ⁻¹	0.42–2.54 (1.17 ± 0.21)	6.29–7.08 (6.59 ± 0.08)	6.46–7.22 (6.94 ± 0.07)	6.54–7.24 (6.78 ± 0.06)	1.91–3.46 (2.54 ± 0.16)	0.016*
10 ⁻²	3.67–5.12 (4.55 ± 0.15)	5.29–6.08 (5.59 ± 0.08)	5.62–6.08 (5.80 ± 0.05)	4.99–6.13 (5.62 ± 0.09)	2.69–3.99 (3.09 ± 0.14)	0.150
10 ⁻³	6.54–9.58 (7.79 ± 0.256)	4.29–5.08 (4.59 ± 0.08)	4.36–5.19 (4.84 ± 0.07)	4.23–5.09 (4.66 ± 0.07)	3.43–4.53 (3.63 ± 0.13)	0.172
10 ⁻⁴	10.17–14.21 (11.76 ± 0.38)	3.29–4.08 (3.59 ± 0.08)	3.27–4.21 (3.83 ± 0.09)	3.16–4.16 (3.66 ± 0.09)	3.66–5.60 (4.34 ± 0.16)	0.134
10 ⁻⁵	14.67–18.21 (16.18 ± 0.36)	2.29–3.08 (2.59 ± 0.08)	2.47–3.17 (2.87 ± 0.07)	2.40–3.06 (2.74 ± 0.06)	4.68–5.77 (5.40 ± 0.16)	0.279
10 ⁻⁶	19.88–29.42 (24.04 ± 0.82)	1.29–2.08 (1.59 ± 0.08)	0.81–2.17 (1.54 ± 0.12)	1.30–2.09 (1.54 ± 0.08)	6.63–8.31 (7.30 ± 0.29)	0.801
10 ⁻⁷	27.99–36.46 (33.35 ± 0.75)	0.29–1.08 (0.59 ± 0.08)	0.09–0.99 (0.40 ± 0.08)	0.27–1.02 (0.59 ± 0.07)	ND ^c	0.021*

^a Counts reflect *M. paratuberculosis* CFU in 100 μl of this dilution.

^b Expected TTD interval ranges between dilutions. Values within this range at the defined dilutions reflect appropriate 10-fold serial dilutions.

^c ND, not determined.

^d P values were obtained by the Kruskal-Wallis test by multiple comparison between plate counts and predicted CFU from both standard curves at each dilution of all five strains. *, significant differences between groups (P < 0.05).

racy of this and other methods for counting of mycobacteria is the tendency of the organism to clump. Our protocols deliberately created homogenous single-cell suspensions to provide the most robust data for method validation, but in clinical samples, most of bacterial cells existed as clumps. Therefore, more work is needed to determine the utility of this method for clinical applications.

The one-phase exponential decay model with three parameters has been widely used to describe the kinetics of drug activity (14) and environmental factors with regard to bacterial growth (12). We found that this model was also effective for interpreting *M. paratuberculosis* growth data, producing standard curves of broad utility.

In comparison with the BACTEC 460 counting method, the MGIT 960 approach has better analytical sensitivity (10^1 CFU versus 10^3 CFU), determines its cell counts in less than half the time, is automated (no daily loading of vials into the BACTEC 460 instrument is required), and does not require radioisotopes. The BACTEC 460 method for *M. paratuberculosis* required at least 25 days to obtain the results for interpretation when inoculated with $>10^3$ CFU, while MGIT results can be obtained in less than 2 weeks. The internal coefficient of variation of CFU estimates between MGIT ParaTB tubes was exceedingly small (0.55% at a 95% CI): only two tubes were necessary for precise *M. paratuberculosis* CFU estimations.

Spectrophotometric (turbidimetry) measurements have long been used to estimate the number of bacteria in suspensions. Although neither very sensitive nor precise, it is a quick, inexpensive method for standardizing bacterial inocula prior to such studies as antibiotic susceptibility testing or experimental animal challenge. By combining spectrophotometry with MGIT, cells can be counted quickly and precisely. As a standard method, we propose that *M. paratuberculosis* cell suspensions be adjusted to a spectrophotometer OD₆₀₀ of 1.00. This equates to roughly 10^8 CFU/ml of *M. paratuberculosis*. One hundred microliters of 10^{-1} to 10^{-3} dilutions of this suspension should then be inoculated into duplicate MGIT ParaTB tubes. With this method, accurate log₁₀ *M. paratuberculosis* CFU can be obtained within 2 weeks. Dilution errors can quickly be detected by examining the TTD intervals between dilutions (Table 2). For example, if 10^6 CFU *M. paratuberculosis* were inoculated into supplemented MGIT ParaTB tubes, the TTD for a positive signal should be obtained in 4 days. The next serial dilution, 10^5 CFU, should signal positive between days 7 and 8 of incubation. Precision in *M. paratuberculosis* counting by the MGIT method can increase experimental precision and decrease the cost of studies of this emerging pathogen.

The universal, subgroup-specific, or strain-specific MGIT *M. paratuberculosis* counting curves can be used in any application requiring the quantification of viable *M. paratuberculosis* cell numbers, such as evaluations of physical factors such as radiation or pasteurization, chemical factors such as pH, salt, or disinfectants, and any in vitro growth promoter or suppressor. This system can also be used to measure whether antimycobacterial drugs are bacteriostatic or bactericidal by allowing the antimycobacterial agent-*M. paratuberculosis* interaction to take place outside the MGIT ParaTB medium and then transferring a small aliquot of the mixture into an MGIT tube for quantification.

Several studies demonstrated previously that *M. paratuberculosis* strains isolated from cattle are genetically conserved (23, 33). The similarity of strain-specific standard curves for subgroup II supports these findings. While the universal standard curve demonstrated in this study has broad utility, the subgroup II-specific standard curve might provide even more precise results for recently isolated, low-passage bovine isolates. Since some *M. paratuberculosis* strains isolated from sheep, bison, and nondomestic species were previously reported to display greater genetic and phenotypic diversity than bovine isolates (1, 13, 23), further work on quantification with this method with such isolates is needed.

ACKNOWLEDGMENTS

The Board of Regents of the University of Wisconsin System gratefully acknowledges that the Awwa Research Foundation is the joint owner of the technical information upon which this publication is based. The Board of Regents of the University of Wisconsin System thanks the Foundation for its financial, technical, and administrative assistance in funding and managing the project through which this information was discovered. The comments and views detailed herein may not necessarily reflect the views of the Awwa Research Foundation, its officers, directors, affiliates or agents.

Partial funding for this work was provided by Cooperative Agreement 98-9613-0032-CA, Veterinary Services, Animal and Plant Health Inspection Service, USDA.

REFERENCES

1. Amonsin, A., L. L. Li, Q. Zhang, J. P. Bannantine, A. S. Motiwala, S. Sreevatsan, and V. Kapur. 2004. Multilocus short sequence repeat sequencing approach for differentiating among *Mycobacterium avium* subsp. *paratuberculosis* strains. *J. Clin. Microbiol.* **42**:1694–1702.
2. Anklam, K. S., E. J. B. Manning, S. Sreevatsan, and M. T. Collin. 2005. Evaluation of a 3 PCR assay for identification of *Mycobacterium avium* subsp. *paratuberculosis* from liquid cultures, p. 549. In E. J. B. Manning and S. S. Nielsen (ed.), *Proceedings of the 8th International Colloquium of Paratuberculosis*. International Association for Paratuberculosis, Madison, WI.
3. Anklam, K. S., E. J. B. Manning, S. Sreevatsan, and M. T. Collins. 2004. Evaluation of a multiplex PCR assay for identification of *Mycobacterium avium* subsp. *paratuberculosis* from liquid cultures, p. 209. In J. T. Saliki (ed.), *Proceedings of the 47th Annual Conference*. American Association of Veterinary Laboratory Diagnosticians, Davis, CA.
4. Badak, F. Z., D. L. Kiska, S. Setterquist, C. Hartley, M. A. O'Connell, and R. L. Hopfer. 1996. Comparison of Mycobacteria Growth Indicator Tube with BACTEC 460 for detection and recovery of mycobacteria from clinical specimens. *J. Clin. Microbiol.* **34**:2236–2239.
5. Bull, T. J., E. J. McMin, K. Sidi-Boumedine, A. Skull, D. Durkin, P. Neild, G. Rhodes, R. Pickup, and J. Hermon-Taylor. 2003. Detection and verification of *Mycobacterium avium* subsp. *paratuberculosis* in fresh ileocolonic mucosal biopsy specimens from individuals with and without Crohn's disease. *J. Clin. Microbiol.* **41**:2915–2923.
6. Chioldini, R. J., and C. D. Buergelt. 1993. Susceptibility of Balb/c, C57/B6 and C57/B10 mice to infection with *Mycobacterium paratuberculosis*. *J. Comp. Pathol.* **109**:309–319.
7. Chioldini, R. J., and J. Hermon-Taylor. 1993. The thermal resistance of *Mycobacterium paratuberculosis* in raw milk under conditions simulating pasteurization. *J. Vet. Diagn. Investig.* **5**:629–631.
8. Collins, M. T., K. B. Kenefick, D. C. Sockett, R. S. Lambrecht, J. McDonald, and J. B. Jorgensen. 1990. Enhanced radiometric detection of *Mycobacterium paratuberculosis* by using filter-concentrated bovine fecal specimens. *J. Clin. Microbiol.* **28**:2514–2519.
9. Cruciani, M., C. Scarparo, M. Malena, O. Bosco, G. Serpelloni, and C. Mengoli. 2004. Meta-analysis of BACTEC MGIT 960 and BACTEC 460 TB, with or without solid media, for detection of mycobacteria. *J. Clin. Microbiol.* **42**:2321–2325.
10. Damato, J. J., M. T. Collins, M. V. Rothlauf, and J. K. McClatchy. 1983. Detection of mycobacteria by radiometric and standard plate procedures. *J. Clin. Microbiol.* **17**:1066–1073.
11. de Juan, L., J. Alvarez, B. Romero, J. Bezos, E. Castellanos, A. Aranz, A. Mateos, and L. Dominguez. 2006. Comparison of four different culture media for isolation and growth of type II and type I/III *Mycobacterium avium* subsp. *paratuberculosis* strains isolated from cattle and goats. *Appl. Environ. Microbiol.* **72**:5927–5932.

12. Dickson, J. S., G. R. Siragusa, and J. E. Wray, Jr. 1992. Predicting the growth of *Salmonella typhimurium* on beef by using the temperature function integration technique. *Appl. Environ. Microbiol.* **58**:3482–3487.
13. Dohmann, K., B. Strommenger, K. Stevenson, L. de Juan, J. Stratmann, V. Kapur, T. J. Bull, and G. F. Gerlach. 2003. Characterization of genetic differences between *Mycobacterium avium* subsp. *paratuberculosis* type I and type II isolates. *J. Clin. Microbiol.* **41**:5215–5223.
14. Edelstein, P. H., T. Shinzato, E. Doyle, and M. A. Edelstein. 2001. In vitro activity of gemifloxacin (SB-265805, LB20304a) against *Legionella pneumophila* and its pharmacokinetics in guinea pigs with *L. pneumophila* pneumonia. *Antimicrob. Agents Chemother.* **45**:2204–2209.
15. Grant, I. R., R. B. Kirk, E. Hitchings, and M. T. Rowe. 2003. Comparative evaluation of the MGIT and BACTEC culture systems for the recovery of *Mycobacterium avium* subsp. *paratuberculosis* from milk. *J. Appl. Microbiol.* **95**:196–201.
16. Grant, I. R., A. G. Williams, M. T. Rowe, and D. D. Muir. 2005. Efficacy of various pasteurization time-temperature conditions in combination with homogenization on inactivation of *Mycobacterium avium* subsp. *paratuberculosis* in milk. *Appl. Environ. Microbiol.* **71**:2853–2861.
17. Gumber, S., and R. J. Whittington. 2006. Comparison of BACTEC 460 and MGIT 960 systems for the culture of *Mycobacterium avium* subsp. *paratuberculosis* S strain and observations on the effect of inclusion of ampicillin in culture media to reduce contamination. *Vet. Microbiol.* **119**:42–52.
18. Hillemann, D., E. Richter, and S. Rusch-Gerdes. 2006. Use of the BACTEC Mycobacteria Growth Indicator Tube 960 automated system for recovery of mycobacteria from 9,558 extrapulmonary specimens, including urine samples. *J. Clin. Microbiol.* **44**:4014–4017.
19. Hoal-van Helden, E. G., D. Hon, L. A. Lewis, N. Beyers, and P. D. van Helden. 2001. Mycobacterial growth in human macrophages: variation according to donor, inoculum and bacterial strain. *Cell Biol. Int.* **25**:71–81.
20. Huang, T. S., C. S. Chen, S. S. Lee, W. K. Huang, and Y. C. Liu. 2001. Comparison of the BACTEC MGIT 960 and BACTEC 460TB systems for detection of mycobacteria in clinical specimens. *Ann. Clin. Lab. Sci.* **31**:279–283.
21. Lambrecht, R. S., J. F. Carriere, and M. T. Collins. 1988. A model for analyzing growth kinetics of a slowly growing *Mycobacterium* sp. *Appl. Environ. Microbiol.* **54**:910–916.
22. Leitritz, L., S. Schubert, B. Bucherl, A. Masch, J. Heesemann, and A. Roggenkamp. 2001. Evaluation of BACTEC MGIT 960 and BACTEC 460TB systems for recovery of mycobacteria from clinical specimens of a university hospital with low incidence of tuberculosis. *J. Clin. Microbiol.* **39**:3764–3767.
23. Motiwala, A. S., M. Strother, A. Amonsin, B. Byrum, S. A. Naser, J. R. Stabel, W. P. Shulaw, J. P. Bannantine, V. Kapur, and S. Sreevatsan. 2003. Molecular epidemiology of *Mycobacterium avium* subsp. *paratuberculosis*: evidence for limited strain diversity, strain sharing, and identification of unique targets for diagnosis. *J. Clin. Microbiol.* **41**:2015–2026.
24. Motiwala, A. S., M. Strother, N. E. Theus, R. W. Stich, B. Byrum, W. P. Shulaw, V. Kapur, and S. Sreevatsan. 2005. Rapid detection and typing of strains of *Mycobacterium avium* subsp. *paratuberculosis* from broth cultures. *J. Clin. Microbiol.* **43**:2111–2117.
25. Pardini, M., F. Varaine, M. Bonnet, G. Orefici, M. R. Oggioni, and L. Fattorini. 2006. Usefulness of the BACTEC MGIT 960 system for isolation of *Mycobacterium tuberculosis* from sputa subjected to long-term storage. *J. Clin. Microbiol.* **45**:575–576.
26. Reddacliff, L. A., P. J. Nicholls, A. Vadali, and R. J. Whittington. 2003. Use of growth indices from radiometric culture for quantification of sheep strains of *Mycobacterium avium* subsp. *paratuberculosis*. *Appl. Environ. Microbiol.* **69**:3510–3516.
27. Stabel, J. R., E. M. Steadham, and C. A. Bolin. 1997. Heat inactivation of *Mycobacterium paratuberculosis* in raw milk: are current pasteurization conditions effective? *Appl. Environ. Microbiol.* **63**:4975–4977.
28. Sung, N., and M. T. Collins. 1998. Thermal tolerance of *Mycobacterium paratuberculosis*. *Appl. Environ. Microbiol.* **64**:999–1005.
29. Sung, N., and M. T. Collins. 2000. Effect of three factors in cheese production (pH, salt, and heat) on *Mycobacterium avium* subsp. *paratuberculosis* viability. *Appl. Environ. Microbiol.* **66**:1334–1339.
30. Sung, N., and M. T. Collins. 2003. Variation in resistance of *Mycobacterium paratuberculosis* to acid environments as a function of culture medium. *Appl. Environ. Microbiol.* **69**:6833–6840.
31. Van Boxel, R. M., R. S. Lambrecht, and M. T. Collins. 1990. Effects of colonial morphology and Tween 80 on antimicrobial susceptibility of *Mycobacterium paratuberculosis*. *Antimicrob. Agents Chemother.* **34**:2300–2303.
32. Whittington, R. J., I. Marsh, M. J. Turner, S. McAllister, E. Choy, G. J. Eamens, D. J. Marshall, and S. Ottaway. 1998. Rapid detection of *Mycobacterium paratuberculosis* in clinical samples from ruminants and in spiked environmental samples by modified BACTEC 12B radiometric culture and direct confirmation by IS900 PCR. *J. Clin. Microbiol.* **36**:701–707.
33. Wu, C. W., J. Glasner, M. Collins, S. Naser, and A. M. Talaat. 2006. Whole-genome plasticity among *Mycobacterium avium* subspecies: insights from comparative genomic hybridizations. *J. Bacteriol.* **188**:711–723.
34. Zhao, B. Y., C. J. Czuprynski, and M. T. Collins. 1999. Intracellular fate of *Mycobacterium avium* subspecies *paratuberculosis* in monocytes from normal and infected, interferon-responsive cows as determined by a radiometric method. *Can. J. Vet. Res.* **63**:56–61.